

MyLab™



Limitless ultrasound imaging

MyLab™



Limitless ultrasound imaging

**MyLab™X8** represents an outstanding source of innovation and technology, designed to accelerate your workflow.

**MyLab™X8** offers: an LCD monitor with the latest technology, a smart stand-by function and a fast boot time, Windows® 10 O.S., zero-click automation functions, and cutting-edge ergonomics.

Achieve infinite results with its highly intuitive user interface and advanced clinical tools, tailored to suit your needs.

The **MyLab™X8** system sets a standard of high performance, offering a brand new ultrasound experience.



# Cutting-edge Integrated Technologies


**MyLab™X8** integrates the latest technologies, delivering a high level of image quality without compromising workflow or efficiency.

● LARGE 21" MONITOR 


LCD monitor with the latest technology, ensuring the best enhancement of the details and a full-screen mode.

● TRANSDUCER CONNECTORS 

Up to 5 transducer connectors enabling fast probe switch to adapt to the most demanding clinical environments.

● TABLET-LIKE TOUCHSCREEN 

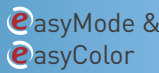

Widescreen multi-function tablet-like touchscreen for uncompromising ease of use.

● FAST SYSTEM BOOT UP 

Fast system boot time from standby, for effective performance at the point of care.

● ZERO-CLICK FUNCTIONS 

Zero-click automation functions provide very fast interface usage and simplify complex procedures in different applications.

●  

“One touch” image optimization through intelligent real-time algorithms.

● BATTERY ON BOARD 

Battery on board\* to enable an autonomous cartbase.

\*optional

# Ergonomics and comfort without compromise

Based on a decade of experience, **MyLab™X8** delivers outstanding ergonomics and comfort in daily practice. With creative solutions for both hardware and software, clinicians are provided with innovative tools.

- ✓ Simplified control panel
- ✓ Large touchscreen with tablet gesture also for displaying recorded images
- ✓ Intelligent real-time algorithms **e**asyMode\* and **e**asyColor\* to simplify the ultrasound image optimisation
- ✓ Smart automation functions like **e**Doppler and **e**Scan to increase the examination time efficiency



\*patent pending

# Limitless mobility

**MyLab™X8** is designed to adapt to all situations.

- ✓ Battery\*
- ✓ Fast boot time
- ✓ Easy plug and play
- ✓ Light and compact
- ✓ Easy to move with smart cable management
- ✓ Real stand-up position



\*optional

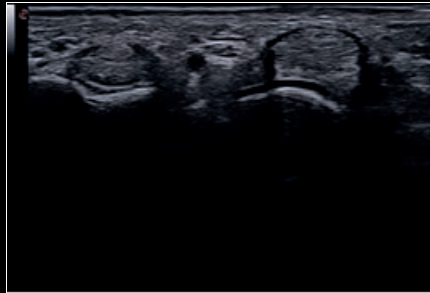
## Large probe portfolio

Esaote iQProbes meet gold quality standards, offering state-of-the-art technology for a large range of applications:

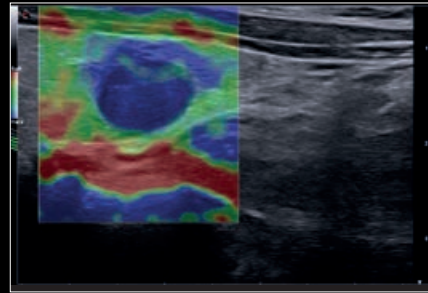
- ✓ Superb imaging outcome
- ✓ Lightweight, appleprobe ergonomics
- ✓ Reduced musculoskeletal strain of up to 70%
- ✓ Increased confidence



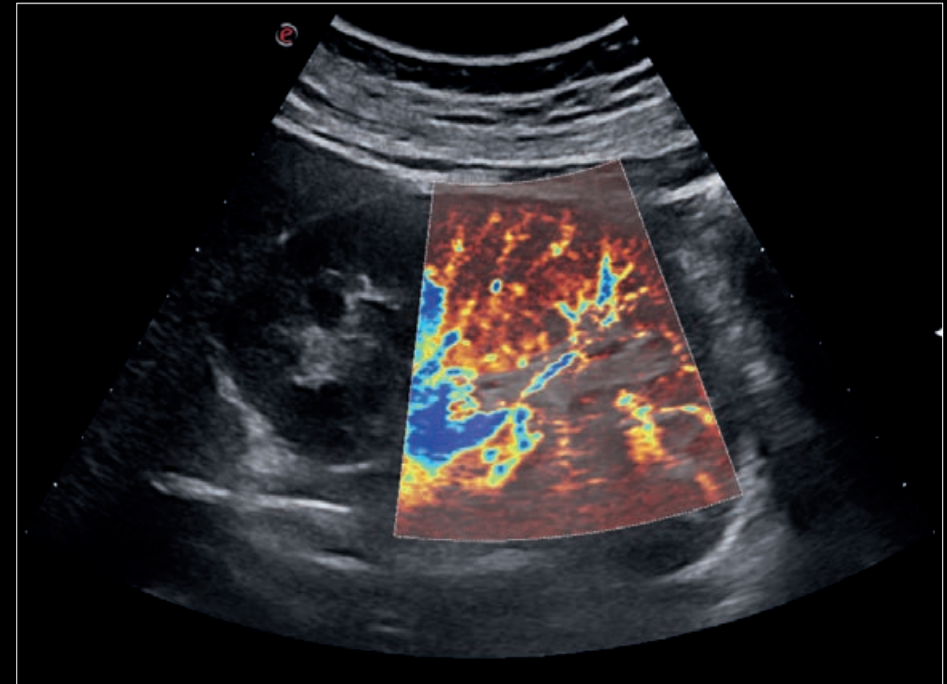
# At the service of the image



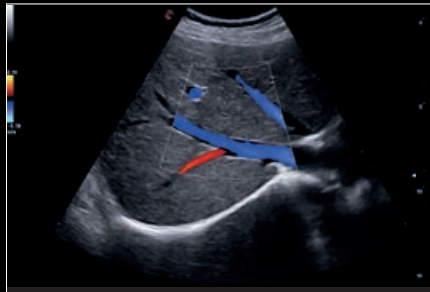
Superficial tendons - Very high frequency exploration of up to 24MHz



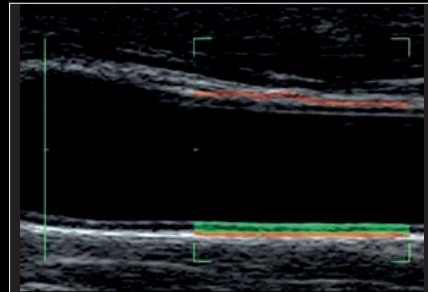
Thyroid - Lesion with ElaXto



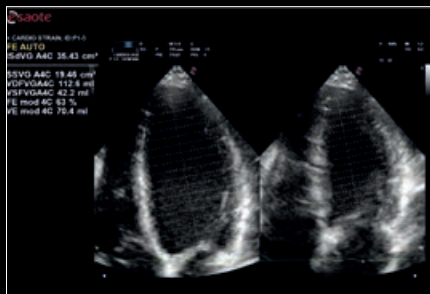
Kidney - Tissue perfusion visualisation with microV



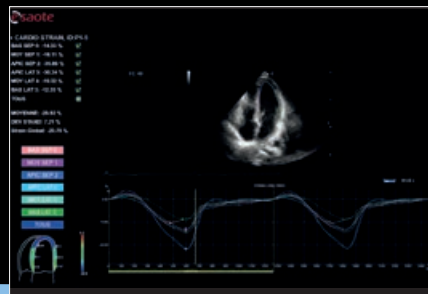
Liver - CPI with color Doppler



Carotid - Real-time measurement of the Intima Media with QIMT



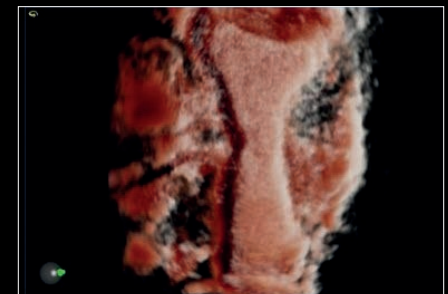
Cardiac - Zero-click EF measurement with AutoEF



Cardiac - Zero-click strain evaluation with XStrain™2D



Baby profile - XView algorithm for increased visibility



Uterus - XLight 3D/4D exploration



[www.esaote.com](http://www.esaote.com)



0123

Please visit us online  
for more information



Esaote S.p.A. - sole-shareholder company  
Via Enrico Meloni 77, 16152 Genova, ITALY, Tel. +39 010 6547 1, Fax +39 010 6547 275, [info@esaote.com](mailto:info@esaote.com)

Windows® is a registered trademark of Microsoft Corporation. MyLab™ is a trademark of Esaote S.p.A.  
The technology and features are system/configuration dependent. Specifications are subject to change without notice. Information might refer to products or modalities not yet approved in all countries.  
Product images are for illustrative purposes only. For further details, please contact your Esaote sales representative.